



EXETER LIVESTOCK CENTRE

MARKET REPORT

April 2025

Friday 4th April – Store Stock Market



EXETER LIVESTOCK CENTRE
FORTHCOMING
SUCKLED CALF & SPRING
CONTINENTAL CATTLE SALES

7th March 2025

**1st Spring Judged Sale of Continental & Continental
Cross Store Cattle**

21st March 2025

**2nd Spring Judged Sale of Continental & Continental
Cross Store Cattle**

11th April 2025

**“Heart of Devon” 13th Anniversary to include
3rd Spring Judged Sale of Continental &
Continental Cross Store Cattle, Show,
Sale of Suckled Calves & Stirks &
SW Charolais Show & Sale of Bulls & Females**



EXETER LIVESTOCK CENTRE

Matford Park Road, Exeter, Devon, EX2 8FD

01392 251261

livestock@kivells.com

www.kivells.com

Friday 4th April

734 STORE CATTLE & STIRKS – 10:00 AM

Auctioneer: Simon Alford 07789 980203

Store Steers to £2900 - Store Heifers to £2480

Larger numbers of store cattle on offer here at Exeter this week with 480 penned and sold with the cattle section totalling 734 when including the younger sorts through the stirk ring. No sign of the unrelenting strong spring trade easing whatsoever when we saw some remarkable returns right across the board for all types and ages of cattle once again. Store steers saw the centre record broken again when a colossal British Blue (29m) from Stuart and Sarah Broom in from Cullompton drew a pretty impressive £2900 followed by younger Blue bullocks (22m) at £2660 for the late CR Mildon and later born again ones (18m) rising to £2480 for a bunch of six from C and S Heywood of Bolham. Best of the forward Simmental steers (23m) eased to £2660 for the late CR Mildon again whilst quality bred and fed yearling Simmental steers from John Hull of Tiverton still ran to £1850. Several good entries of Limousin bred steers about again this week with standout groups coming back at £2660 (21m) for Andrew Banbury of Crediton, together with other smart sorts (24m) making £2630 for six from Andrew Cleave of Christow and £2570 for Brian Vallance and Family up from Bickington with more outstanding yearlings selling to £1840 for a Limousin from Rob Bickle of Bridestowe. Charolais steers up next when a pair (18m) from John Cole and Family of Ivybridge came back at £2610 apiece whilst five striking sorts (21m) from Alan Hembrow of Lostwithiel saw £2300 a life. Also, Tom O'Brian of Littlehempston saw a couple (17m) draw £2000 each. A decent run of Hereford bred steers (24m) from Gordon White and Family from Coleford looked well sold when reaching £2470 as did four high calibre South Devon bullocks (22m) from Ross Skelley of Shaugh Prior when picking up £2430 with a couple more of a similar age at £2390 for Martin and David Sampson of Chudleigh. Just about the only Salers steer (21m) on offer this week sold readily at £2390 for John Cole and Family whilst Aberdeen Angus bullocks (24m) saw £2370 for C and S Heywood and younger (16m) Angus reached £1780 for a pen of five from Robert and Annette Pearse of Sidbury. Other steer prices of interest included smart yearling British Blondes at £2010 for Martin and Karen Curtis from Plymouth, Fleckvieh steers (18m) at £1950 for CSN Partridge Farms of Broadclyst and rangy Friesians (30m) fetching £1940 for Paul Belworthy of Exeter. Plenty of top notch store heifers forward this Friday with a pen of five eye catching Charolais (24m) rising to a decent top of £2480 apiece with a bunch of later born Charolais (18m) still drawing £2340 for Ross Skelley. Limousin heifers (23m) of high order from Brian Vallance and Family sparked strong demand when making £2480 with young yearling Limousin sorts from Rob Bickle looking dear at £1760. Gordon White and Family were back when selling their strong Hereford heifers (24m) to £2420 as were Martin and David Sampson when parting with a nicely covered South Devon (25m) at £2310 and C and S Heywood who sold four cracking British Blue females (22m) for £2300 apiece. Robert Moore up from Diptford saw his pen of five delightful Aberdeen Angus heifers (20m) sell away to £2080 a life whilst Salers females rose to £2020 (28m) for Tom O'Brian and £2000 (20m) for John Cole and Family, also, a trio of Hereford heifers (18m) from J Skinners and Sons of Buckfastleigh made £1880 apiece. Just a sprinkling of grazing cows about this week with the very best selling to £1870 for a grand South Devon from Chris Heath of Sherford.

Please could we remind all customers of the need to clean and disinfect their vehicles and to complete the Vendor Declaration on the back of the entry forms.

Thank you



Penbode
Farm Vets



- Competitively priced farm medicines
- Dairy and beef fertility clubs
- 24/7/365 veterinary cover
- Livestock fertility testing and advice
- VetTech services
- In-house labs and lambing bays

www.penbodevets.co.uk

Holsworthy | Bradworthy | Stratton | Launceston | Camelford

254 STIRKS & SUCKLED CALVES

Auctioneer: Ian Caunter 07813 068935

A good yarding of young cattle met yet again another outstanding trade. Steve Thorne & Family across from St Giles on the Heath lead the way with Charolais cross steers (11m) topping out at £1530 with Limousins off the same farm attaining £1370. MA Stephens of Plympton presented Simmental cross steers (11m) which achieved £1490 whilst a super run of Angus steers from David & Justine Colton of Princetown realised £1470 (x2), £1440, £1420, £1340 (9m) and £1160. Further native types this time from Markwell Farm Partnership saw Hereford cross steers top out at £1470 with others to £1460 & £1360 (11m). Best of the dairy bred types saw Matthew Cook & Hubert Elworthy of Chawleigh see Blue steers only (8m) race to £1340 with younger types attaining £1040 & £980 (7m). South Devon steers from N Vincent of South Brent levelled out at £1220 (13m) whilst HT Davis in from Chagford presented Limousin cross steers (12m) which attained £1150. Further dairy bred Blue steers from Toby & Beverly Boys of Totnes looked very well sold at £1130 (10m) whilst the Harding Family of Throwleigh sold Limousin cross steers (10m) which topped at £1120. Young Charolais steers from John Shears of Chagford just (5m) hit £1090 with more dairy bred Blues this time from H Burrow of Yeoford (8m) reaching £1050. Steve Thorne & Family topped the heifer section with Charolais crosses (11m) racing to £1240 with others to £1170, whilst MA Stephens saw their Simmental heifers (11m) hit £1180. Terry & Jean Tall of Modbury achieved £1160 for Limousin cross heifers (12m) whilst a run of Hereford heifers from Markwell Farm Partnership topped out at £1140 with others to £1080 (11m). Best of the dairy bred heifers saw the Vooght Family of Luton present Blues (12m) which realised £990 with Hereford heifers from Chris & Katie Stephens of Bickington levelling out at £940. Young Charolais heifers from John Shears (5m) raced to £900, whilst the best of the dairy bred Blues achieved the same figure for both Toby & Beverley Boys and Matthew Cook & Hubert Elworthy (7m). Further Blue heifers from H Burrow (7m) attained £860 whilst Hereford heifers from Rob Barons of Slapton topped out at £850 (12m). Best of the bulls realised £940 for Roger Hunt of Totnes presenting Limousin crosses (7m).

138 CALVES 10.15 AM

Auctioneer: Mark Davis 07773 371774

A decent entry of calves saw an excellent trade overall with just a few medium sorts perhaps a shade easier.

Top of the day was £800 for the best of a cracking run of weaned Simmental bulls from Ross Govier of Longdown who sold others to £780, £760, £720 & £710. Young British Blue bulls a cracking trade topping at £600 for Evershot Farms Ltd of Dorset who sold others to £535, £505, £502 & £500 with others to £532 for Gerald Emmett of Cullompton, £495 for Stuart Dagworthy of Woodbury Salterton and £500 & £475 for Michael Pyle of Broadhembury. Best of the Native bulls sold to £502, £465 & £455 for smart young Aberdeen Angus bulls from Evershot Farms Ltd with others to £402 for Gerald Emmett and £390 for Tim Lock of Cullompton. Young Hereford bulls sold well to £415 for Messrs JW Davies & Sons of Uplowman, £405 & £395 for Messrs JLH Vallis & Son of Bradninch and £375 for Messrs DW Cole & Son of Bradninch. Heifers topped at £635 for a smart weaned Simmental heifer from Ross Govier. Young British Blue heifers a super trade to £492, £488, £475, £460 & £445 for Messrs RH & MJ Hurford of Axminster with others to £465 for Gerald Emmett, £460 & £435 for Michael Pyle, £435 & £430 for Bickton College and £428 for Evershot Farms Ltd. Limousin heifers to £450 for Ross Govier. Aberdeen Angus heifers to £340 for Messrs RH & MJ Hurford & £302 for Evershot Farms Ltd. Hereford heifers to £300 for Messrs JLH Vallis & Son. Dairy bulls a cracking trade with 3 cracking Montbeliarde bulls to £480, £470 & £410 for Messrs RH & MJ Hurford. Fleckvieh bulls to £162 for Tim Lock and Friesian bulls to £240, £200 x 2 & £160 for Bradley & Hayles Foss of Totnes.

CALVES	Bulls			Heifers		
Breed		TOP	AVE		TOP	AVE
British Blue	31	600	390	31	492	341
Limousin				1	450	450
Simmental	5	800	754	1	635	635
Hereford	5	415	378	4	300	242
Aberdeen Angus	20	502	296	17	340	185
Friesians	15	240	108			
Montbeliarde	3	480	453			
Fleckvieh	2	162	121	2	280	220



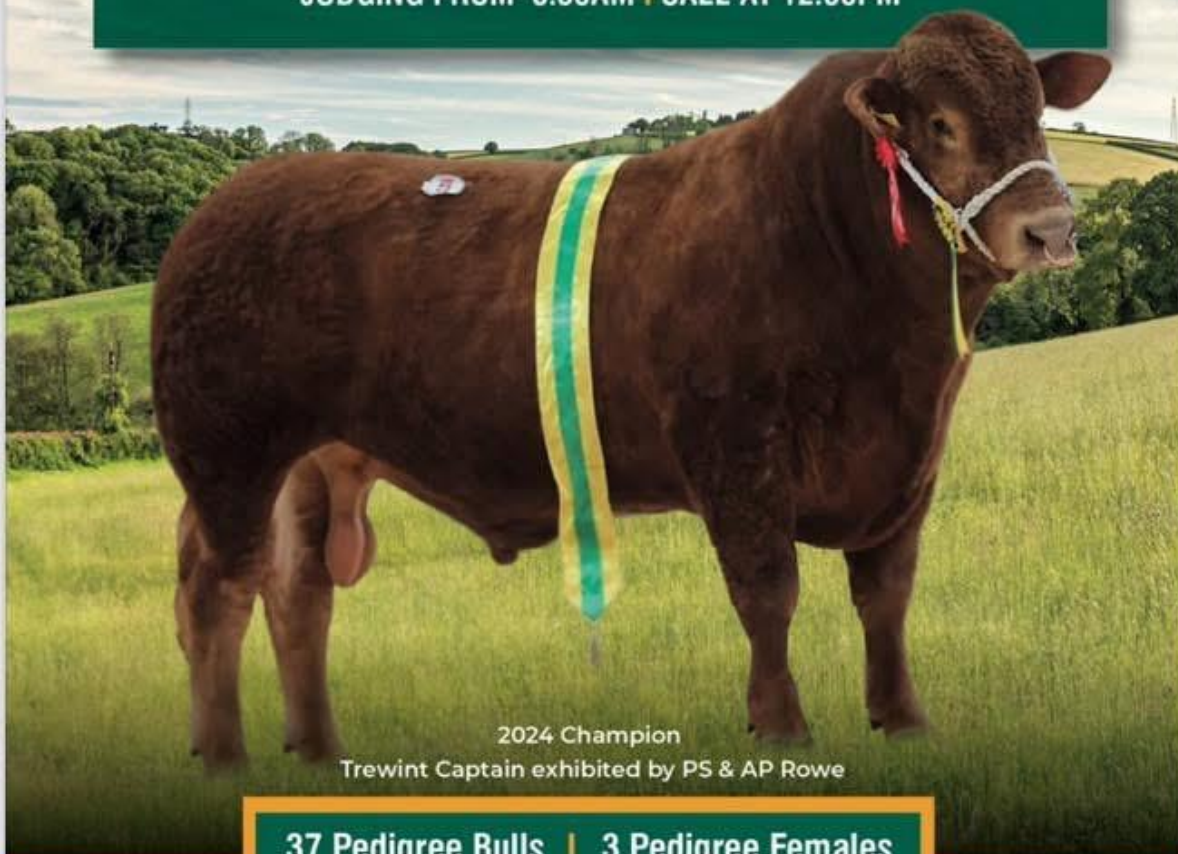
SOUTH DEVON HERD BOOK SOCIETY'S SPRING SHOW & SALE 2025

EXETER LIVESTOCK CENTRE, MATFORD, EXETER, EX2 8FD

Sale by Auction under NBA Terms & Conditions of Sale

WEDNESDAY 9TH APRIL 2025

JUDGING FROM 8.30AM | SALE AT 12.30PM



2024 Champion

Trewint Captain exhibited by PS & AP Rowe

37 Pedigree Bulls | 3 Pedigree Females

All TB tested and either CHaCs accredited free of BVD or individually tested negative for BVD antigen, and all vaccinated for BVD at least one month prior to Sale date.

SINGLE STEP BREEDPLAN EBVs incorporating genomics

1239 SHEEP – 10.45 AM
Auctioneer: Russell Steer 07788 318701

Orphan Lambs to £75 Store Hogs to £151 Grazing Ewes to £184
Double Couples to £385 Single Couple to £340
Centurion Rams to £893 & Females to £315

100 ORPHAN LAMBS

Exactly 100 orphan lambs to kick things off in the sheep pens met with a very firm trade from start to finish with multiple bulk buyers in attendance ensuring a bubbly trade throughout. Chris and Katy Steer of Modbury topped proceedings with a strong lamb at £75 and others at £49 & £48, John Reddaway and sons of Cossick Cross sold their best at £70 and others at £52 whilst Duncan Kittow of Tiverton reached £68 and Alan Bickley of Puddington claimed £62. Various others up around £50 and a very impressive average of £33.30 was achieved.

564 STORE HOGGS

On to the hogs and numbers really beginning to dry up now as we enter April and the 564 forward today contained all sorts of qualities and breeds with everything keenly sought after. Steve Isaac of Ashwater topped the sale at £151 with Billy Steed of Davidstow at £140, £134 & £130 as Phil Morish of Cheriton Bishop made £136 and Messrs Middleton of Ashreigney sold pens at £130 & £130.50. All medium and short keep hogs top side of £100 with the bottom end tidy ups now becoming an acquired taste but still a delicacy to some with animated bidding throughout with smaller stunted sorts from £65 to £95 and those with faults less than that but all included in the overall average of £110.

59 GRAZING EWES & RAMS

Grazers remain a flyer and peaked at £184 for a pen of ewes from Graham Bond of East Allington, £172 & £162 for Chris Southcott of Uffculme with Texel rams and JC Powell of Holne also at £172. Plenty of business done between £100 & £150 including the Luxton family of Okehampton with a pen of Scotch ewes looking well sold at £107.

199 EWES/HOGGS & 276 LAMBS (475LIVES)

A few more couples forward were an absolute flyer from the first to the last with numerous bulk buyers trying to secure numbers with a budgets of £100 per life and stretching it to the max. Winston Thorne of UMBERLEIGH brought his annual consignment of shearlings with lambs at foot and topped the day with Cheviot Mule doubles at £385, Suffolk x Mule doubles at £380 and a Mule double at £370 as well as selling Mule singles well at £288. Chris and Sue Popham had an exquisite pen of Suffolk Scotch Half bred FM ewes with twins that made £378 whilst Margaret Heard of Maundown had similar Suffolk x ewes with twins at £372. Mike Swerling of Marianlseigh had a great pen of NC Mule FM ewes with stronger doubles at £370 as well as a BM Mule double at £362 and other pens of Mule F/BM doubles usually all top side of £100 per life. Topping the singles were a smart pen of Dorset ewe hogs from Mark Thomas and family of South Petherwin with purebred lambs that rose to £340 or £170 per life with next best being Winston Thorne's Mules at £288 and Simon Curtis of Cadeleigh sold FM Suffolk singles at £282. Overall averages of £253 per outfit and £106 per life.

25 CENTURION DORSET RAMS & 16 FEMALES

The annual sale on behalf of the Centurion Sheep breeders met a selective trade throughout with Fooks Bros of the Poorton Flock, Bridport topped the sale at 850gns with their Shearling as Rich Rossiter and family of Burton Farm, Galmpton sold their best ram lamb at 800gns, Stuart Alderson travelled down from Bolton to see his three best shearlings make 550gns and Jack & Alexandria James of Shaftesbury sold their best shearling at 500gns. Females sold to 300gns, 260gns twice and 250gns twice again for Stuart Alderson with both Joe Duffosee of Warminster and Mesrs Brookin of Ceredigion sold numerous shearlings at 250gns. Rams averaged £562 and females £270.

IMPORTANT NOTICE TO ALL SHEEP VENDORS:

- *Please ensure all sheep are tagged in the approved (EID) manner before arrival at the livestock market and checked before you leave.*
- *Please ensure all VAN numbers are available when booking in your sheep, VAN numbers are only valid for 12 months from date of issue, ensure yours is up-to-date.*
- *Please complete the market entry form as well as the sheep licence making sure you have completed the number of sheep you have bought to market.*

Thank You for your Co-operation



KIVELLS **Rural Professional**
www.kivells.com

Exeter 01392 252262
Holsworthy 01409 253275
Launceston 01566 776886
Liskeard 01579 345543

Your Kivells Rural Professional Department offer a complete valuation and rural service.

✓ Capital Grants	✓ Renewables Advice	✓ Valuations	✓ Planning
✓ Compensation	✓ Sustainable Farming Incentive	✓ Landlord/Tenant	

LIVE &
ONLINE

EAST DEVON COLLECTIVE MACHINERY SALE

ENTRIES
INVITED
NOW!

Stafford Cross, Nr Seaton, off A3052 EX24 6HZ
(what3words – Buckets/Prove/Florists)

WEDNESDAY 30th APRIL ~ 10.30 AM

ENTRIES INCLUDE: Massey Ferguson 575 2WD Tractor (1090 hours clock stopped), Fiat 70 90 4WD Loader Tractor (9609 hours) G Reg comes with Loader, John Deere 6310 4WD with Loader (12500hrs) "02" reg 30 kph, Case IH 4240 XL 4WD, Kawasaki Mule 610 petrol, Massey Ferguson 575 ADG 978T, McConnel Rhino 9ft Topper, McConnell Hedge Trimmer PA52 Hy Reach, KRM Tined Weeder & Over Seeder, Teagle Titan 7 Silage Trailer, Vicon Rotaflow RS-C Fertilizer Spreader, Moulton Yard Scaper, Bale Spikes x2, Concrete Weight, Post Banger for Front Loader, Vicon Rake RH350, Flat Eight, P2 Haybob (new wheels and tyres), McConnell PA34 Hedge Trimmer, Fella SM247 Disc Mower, Dung Grab, Bucket, Humal Bale Squeeze, Muck Grab, Ballast Roller, Twose Bale Squeeze, Shear Grab, Cultivator, Log Splitter, Livestock Trailer (old), Teagle Tiger 6ton bale trailer, Krone Swadro 395 Single Rotor Rake, Quad Trailer, Twin Axel Bale Trailer, Single Axel Tipping Trailer, Foot Trimming Crush, New IAE Cattle Gates, Pratley Sheep Handling System (approx. 20x 7ft gate), Qty of Round Feeders Cattle & Sheep, Qty of Hayrack on Wheels, Qty of Heat Lamps, Qty of Sheep Hay Racks, Qty of Water Troughs, Calf Dehorning Crate, Sheeted Metal Sheep Hurdles, Wooden Lambing Pens, Sheeted Hurdles, Hanging Sheep Troughs, Sheep Head Yoke, IAE Lamb Creep Feeders, Hanging Hay Rack, Plastic Hanging Troughs, Qty of Troughs, Turnover Sheep Crate, Gates/Posts (Heavy Duty Gates), Metal Sheeted Gates, Qty of Sheep Netting, Lamb Weigh Crate, IAE Locking Head Yoke, Various Workshop Tools, Roof Sheets, Various Yard Gates, Electric Fence Stakes, Bags of Cement, Used Sheep Wire, Various Hand Tools, Wooden Fencing Posts & Timber, Gate Posts, Buckets, Qty of Wooden Sleepers, Qty of Wooden Stakes, Generator, Gale Breaker (new), Security Fencings, 2 Petrol Generators, Compressor, 2 Hand Post Bangers, Electric Fencers, Pedestrian Barriers, Ladders, Wheelbarrow, Acro Props, Parlour Basin Set of 20kg front weights and much more!



For further information or entries for any of the above please contact Exeter Livestock Centre
Call: 01392 251 261 / Email: machinery@kivells.com Info at www.kivells.com

FORTHCOMING SALES

MONDAY 7TH APRIL – EXETER LIVESTOCK CENTRE

Weekly Prime Stock Market

WEDNESDAY 9TH APRIL – EXETER LIVESTOCK CENTRE

Spring Sale of Cattle on behalf of the South Devon Herd Book Society

FRIDAY 11TH APRIL – EXETER LIVESTOCK CENTRE

Weekly Store Stock Market to inc “Heart of Devon” 13th Anniversary – 3rd Spring Sale of Continental & Continental X Store Cattle, Special Show & Sale of Charolais Bulls and Females, Sale of Dairy Cattle including English Gold Top Sale of Jerseys, Show & Sale of Suckled Calves, Show and Sale of Ewes and Lambs and Fortnightly Pig Sale

MONDAY 14TH APRIL – EXETER LIVESTOCK CENTRE

Weekly Prime Stock Market to inc Easter Show & Sale of Spring Lambs

WEDNESDAY 16TH APRIL – EXETER LIVESTOCK CENTRE

Devon YFC Show & Sale

FRIDAY 18TH APRIL – EXETER LIVESTOCK CENTRE

GOOD FRIDAY – NO MARKET

MONDAY 21ST APRIL – EXETER LIVESTOCK CENTRE

Weekly Prime Stock Market

TUESDAY 22ND APRIL – EXETER LIVESTOCK CENTRE

Sale of TB Restricted, Cull, Prime and Store Cattle

FRIDAY 25TH APRIL – EXETER LIVESTOCK CENTRE

Weekly Store Stock Market to inc Monthly Sale of Organic Cattle & Sheep, Month Catalogued Sale of Beef Breeding Stock and Fortnightly Pig Sale

MONDAY 28TH APRIL – EXETER LIVESTOCK CENTRE

Weekly Prime Stock Market

WEDNESDAY 30TH APRIL – STAFFORD CROSS, Nr SEATON off A3052 EX24 6HZ

East Devon Collective Machinery Sale – for more information please see website.

FRIDAY 2ND MAY – EXETER LIVESTOCK CENTRE

Weekly Store Stock Market to inc Catalogued Sale of Hogg Couples

MONDAY 5TH MAY – EXETER LIVESTOCK CENTRE

Weekly Prime Stock Market

WEDNESDAY 8TH MAY – EXETER LIVESTOCK CENTRE

Dorset Horn & Poll Dorset May Fair Sale

Farms | Land | Smallholdings

Thinking of selling?

Kivells are at the heart of the farming community throughout the westcountry and beyond and have been selling farms, land and smallholdings since 1885.



Our tailor made service includes;

- ✓ Personal and confidential service
- ✓ Experienced team of Farm Agents
- ✓ Tailor made marketing plans across a variety of platforms
- ✓ Network of contacts within the farming community
- ✓ Added value with advice on Tax, Planning and Stewardship



In-house
bespoke
brochures



Over 40,000
followers on
Social Media



Millions of
page views on
kivells.com,
Rightmove
& Zoopla



Coverage in
national and
regional
publications

With 140 years of industry experience, we pride ourselves in providing friendly and professional advice on all aspects of selling your farm, land or smallholding.

Farms For Sale

KIVELLS

www.kivells.com

Great Huish Farm Tedburn St. Mary Exeter

- Grade II Listed detached four bedroom house with three reception rooms
- Two further cottages providing income generation or multi-generation living
- Ring Fenced Farm
- Range of modern and traditional farm buildings
- Development opportunities with some planning consent in place
- Easy access to the A30 & M5
- In all some 39.56 acres of agricultural land

Guide Price: £1,950,000

Exeter Farms & Land Department
exeter@kivells.com | 01392 252262



Farms For Sale

KIVELLS

www.kivells.com

Blagdon Manor Farm North Tamerton, Holsworthy

Privately set residential and livestock farm on the Devon/Cornwall border.

- Just under 200 acres of ring fenced land
- Imposing four/five bedroom Grade II listed farmhouse and two bedroom bungalow (subject to Agricultural Occupancy Condition)
- Extensive range of modern livestock buildings, plus some more traditional stone barns with potential, subject to planning
- Equestrian appeal with stabling, all weather track and sand school/turnout areas
- Huge appeal with enormous potential to diversify

Guide Price: £2,500,000

Holsworthy Farms & Land Department
farms@kivells.com | 01409 259547



Farms For Sale

KIVELLS

www.kivells.com

Tregonhay Farm Kergilliack, Falmouth

Beautifully positioned stock farm, within easy reach of Falmouth, Helford Passage and the South Coast.

- Substantial and well appointed six bedroom farmhouse
- Useful range of adaptable buildings
- 85½ acres of private ring-fenced land
- Superb views
- EPC G

Guide Price: £2,000,000

Holsworthy Farms & Land Department
farms@kivells.com | 01409 259547



Farms For Sale

KIVELLS

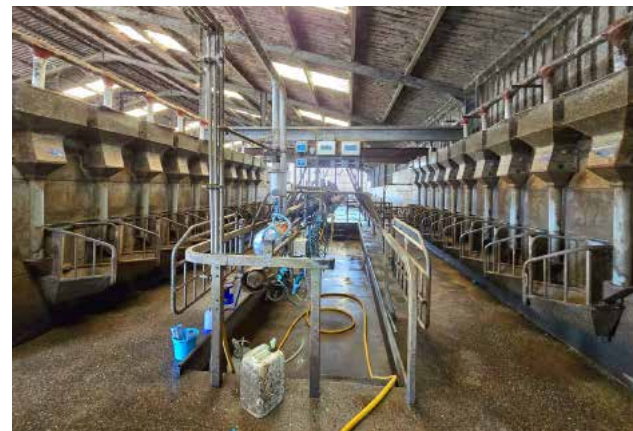
www.kivells.com

Dairy Unit and Land at Melbury Parkham, Bideford

- Ring fenced modern dairy unit
- 127 cubicles
- 10/20 swing over parlour
- Youngstock building
- Just under 50 acres

Guide Price: £800,000

Holworthy Farms & Land Department
farms@kivells.com | 01409 259547



Farms For Sale

KIVELLS

www.kivells.com

West Burrow Farm Bratton Clovelly, Okehampton

A quietly set rural small holding offering huge potential.

- Grade II* Listed thatched farmhouse in need of modernisation.
- 3 beds, 2 receptions.
- Two adjoining traditional barns.
- Land and woodland

Guide Price: £750,000

Holsworthy Farms & Land Department
farms@kivells.com | 01409 259547



Farms For Sale

KIVELLS

www.kivells.com

Landabethick Farm Blisland, Bodmin

Available as a whole or in 2 lots

- Five/six bedroom (one en suite) detached house, three reception rooms and conservatory
- Splendid private location
- Located on the fringe of the wide expanses of Bodmin Moor; close to the sought-after moorland village of Blisland
- Barns ripe for conversion
- Access to the Camel Trail for walking and cycling only 0.5 miles distant
- In all 77.11 acres of agricultural land and ancient woodland

LOT 1 - House, buildings and 54.83 acres.
Guide Price: £1,450,000

LOT 2 - Approximately 22.28 acres of ancient woodland.
Guide Price: £150,000

As a whole: £1,600,000

Liskeard Farms & Land Department
mark.bunt@kivells.com | 01579 345543



Farms For Sale

KIVELLS

www.kivells.com

Fern Hill Farm Mount, Bodmin

- Farm with significant development potential
- Range of agricultural and equestrian buildings
- 60.29 acres of land including productive pasture
- Two bedroom lodge
- Planning for farm dwelling and residential caravan
- Located in a super rural location with far reaching valley views
- Freehold with vacant possession upon completion

Guide Price: £1,150,000

Liskeard Farms & Land Department
mark.bunt@kivells.com | 01579 345543



Farms For Sale

KIVELLS

www.kivells.com

Tregaminion Manor Farm Morvah, Pendeen, Penzance

- Idyllic coastal setting
- Ring fenced farm in an Area of Outstanding Natural Beauty
- Multiple dwellings for income generation or multi-generational living
- Period farmhouse and two cottages
- Range of modern and traditional farm buildings
- Development opportunities with some planning consent in place
- In all some 118 acres
- EPC C, G & G.

Guide Price: £2,500,000

Holsworthy Farms & Land Department
farms@kivells.com | 01409 259547



Farms **For** Sale

KIVELLS

www.kivells.com

Higher Norley Farm Northlew, Okehampton

- Just over 93 acres of productive pasture land
- A useful range of farm buildings including 96 cubicles, loose housing, fodder store and workshop
- Wonderful far reaching views to Dartmoor
- For sale by Private Treaty.

Guide Price: £1,100,000

Holsworthy Farms & Land Department
farms@kivells.com | 01409 259547



Development Site **For Sale**

KIVELLS

www.kivells.com

Development Site at Lower Newton Farm Zeal Monachorum, CREDITON, Devon

- Valuable residential development opportunity
- Range of agricultural buildings with planning permission for demolition and creation of three new build, detached four and three bedroom dwellings
- Potential under extension of Permitted Development Rights for retention and conversion of the existing buildings (Clarkson's Law – Maximum 10 dwellings), subject to planning
- Additional land available

Guide Price: £450,000

Exeter Farms & Land Department
simon.alford@kivells.com | 01392 252262



Aerial view looking north west

Land For Sale

KIVELLS

www.kivells.com

Land at Yollaberry

Hatherleigh | Guide Price £120,000 - £140,000



Just over 9¾ acres of gently sloping pasture land in a stunning location with parish road frontage and lane access.

Holsworthy Farms & Land Agency
Farms@kivells.com | 01409 259547

Land at Stoke Canon

Exeter, Devon | Offers in Excess of £375,000



A highly productive run of level arable and pastureland with livestock handling pens extending to just under 46 acres.

Exeter Farms & Land Department
simon.alford@kivells.com | 01392 252262

Land at Hole Farm (Lot 1)

Ashwater, Beaworthy | Guide Price £620,000



Approx. 57.58 acres of well farmed productive grassland. Mainly level/gently sloping and extremely well fenced.

Holsworthy Farms & Land Agency
Farms@kivells.com | 01409 259547

Land at Polzeath

Wadebridge, Cornwall | Guide Price £995,000



Just over 15 acres of prime farmland in a stunning location with long term development potential, subject to planning.

Holsworthy Farms & Land Department
farms@kivells.com | 01409 259547

Land at Pipswell Cross

Morwenstow, Bude | Guide Price £290,000



Just under 35 acres of productive pasture and arable ground in a sought after farming area with road frontage and access and far-reaching views as far as Lundy Island.

Holsworthy Farms & Land Agency
Farms@kivells.com | 01409 259547

Land for Auction

Wednesday 9th April, 7.00pm

Venue: Lifton Strawberry Fields, Lifton, Devon PL16 0DE

KIVELLS

www.kivells.com

Land at Holemoor

Bradford, Holsworthy | Auction Guide Price £35,000 - £40,000
For sale by public auction - Wednesday 9th April



Just under 4 acres of gently sloping pasture land on the edge of a rural hamlet boasting road frontage and access and lovely countryside views.

Holsworthy Farms & Land Agency
farms@kivells.com | 01409 259547

Land at St. Erney

St. Erney, Landrake, Saltash | Auction Guide Price £65,000
For sale by public auction - Wednesday 9th April



Extending to some 6.07 acres in all, the Land at Erney comprises a single field, which is currently planted with a variety of brassicas.

Holsworthy Farms & Land Agency
farms@kivells.com | 01409 259547

Land at Land at Broad Parkham

Parkham, Bideford | Auction Guide Price £140,000 - £150,000
For sale by public auction - Wednesday 9th April



14.65 acres comprises two gently sloping pasture fields including a small area of woodland. The land benefits from parish road frontage, good access and natural and mains water.

Holsworthy Farms & Land Agency
Farms@kivells.com | 01409 259547

Land at Highercliff Woods

Duloe, Liskeard | Auction Guide Price £60,000 - £70,000
For sale by public auction - Wednesday 9th April



Woodland extending to approximately 19.67 acres comprising a block of mature Beech trees supporting a wide range of flora and fauna and situated off a quiet parish road.

Liskeard Farms & Land Agency
mark.bunt@kivells.com | 01579 345543

Land at Venncott

Newton St. Petrock, Holsworthy | Auction Guide Price £60,000
For sale by public auction - Wednesday 9th April



The Land at Venncott extends to some 6.46 acres and comprises very gently sloping pasture land which is divided into two handy sized enclosures.

Holsworthy Farms & Land Agency
Farms@kivells.com | 01409 259547

Plot of land beside Queensland

Trelights, Port Isaac | Auction Guide Price £50,000
For sale by public auction - Wednesday 9th April



A generous plot of agricultural land extending to circa 0.22 acres with excellent further potential to add value with a variety of uses, all subject to obtaining the necessary planning consents.

Launceston Estate Agents
launceston@kivells.com | 01566 777777

Land for Auction

Wednesday 9th April, 7.00pm

Venue: Lifton Strawberry Fields, Lifton, Devon PL16 0DE

KIVELLS

www.kivells.com

Land at Fox Hole (Lot 1)

Whitstone, Holsworthy | Auction Guide Price £150,000
For sale by public auction - Wednesday 9th April



Approximately 19.73 acres of level pasture land with road frontage in a rural yet accessible location.

Holsworthy Farms & Land Agency
farms@kivells.com | 01409 259547

Land at Fox Hole (Lot 2)

Whitstone, Holsworthy | Auction Guide Price £45,000
For sale by public auction - Wednesday 9th April



A single level pasture field of approximately 6.49 acres in a quiet rural location.

Holsworthy Farms & Land Agency
farms@kivells.com | 01409 259547

ID Requirements

All auctioneers are now required to verify the identity of all bidders before the auction. Bidders will need to register with Kivells on the night of the auction and, in doing so, will be required to provide one form of government issued photographic identity and a utility bill addressed to them at their home address, dated within 3 months of the date of the auction. If we are not fully satisfied, we will not be able to proceed with the transaction.



2025 Auction Dates

9th April
14th May
18th June
30th July
3rd September
8th October
12th November
30th December

For further details,
including times, venue
and information on
how you can bid
online, please visit

www.kivells.com

Previous Auction Results

Wednesday 12th March

KIVELLS

www.kivells.com

Land at Fiddlecott

Chawleigh, Chulmleigh | Auction Guide Price £175,000
SOLD: £256,000



Extending to some 25.46 acres comprising a useful block of gently sloping grass land with just under 8 acres of scrub and native woodland on its southern boundary.

Holsworthy Farms & Land Agency
farms@kivells.com | 01409 259547

Land at Boldventure

Germansweek, Beaworthy | Auction Guide Price £75,000 - £95,000
SOLD: £90,000



Approximately 12 acres of pastureland with excellent road access and accessible to Launceston, Okehampton, Bude and Holsworthy.

Holsworthy Estate Agents
holsworthy@kivells.com | 01409 253 888

Land at Penvith

St. Martin, Looe | Auction Guide Price £50,000 - £55,000
SOLD: £116,000



5.47 acres of pasture land in a single enclosure with parish road frontage and a timber frame and timber clad field shelter. Freehold with vacant possession upon completion.

Liskeard Farms & Land Department
mark.bunt@kivells.com | 01579 345 543

Land near St Winwolaus's Church

Tremaine, Launceston | Auction Guide Price £10,000
SOLD: £9,000



Approximately 0.24 acres of land in a rural yet convenient location suitable for a number of purposes including amenity or recreational use.

Holsworthy Farms & Land Agency
Farms@kivells.com | 01409 259547

Land at Scrubtor

Tavistock | Auction Guide Price £45,000 - £50,000
SOLD: £50,000



Approximately 3.49 acres of pasture land in a single gently sloping enclosure with parish road frontage.

Liskeard Farms & Land Agency
mark.bunt@kivells.com | 01579 345543

Farms Sale Agreed

KIVELLS

www.kivells.com

Keymelford Farm Buildings & Land Keymelford, Colebrook, Crediton, Devon



Lot 1 - Agricultural buildings and yard area with land surrounding extending to 0.41 acres.
Guide Price: £150,000

Lot 2 - Agricultural building with concrete pad and land surrounding extending to 0.41 acres.
Guide Price: £135,000

Lot 3 - A small grassland area extending to approximately 0.14 acres. **Guide Price: £25,000**

Exeter Farms & Land Agency
exeter@kivells.com | 01392 252262

Larrick Farm South Petherwin, Launceston

- Super reverse living barn conversion
- 4 bedrooms and 2 bathrooms
- Outbuildings for livestock or equestrian use
- 45 acres of pasture land

Guide Price: £1,000,000

Holsworthy Farms & Land Department
farms@kivells.com | 01409 259547



Farms Sale Agreed

KIVELLS

www.kivells.com

Worthen Farm Pyworthy, Holsworthy, Devon



- Grassy ring fenced stock farm with 151 acres
- South facing three bedroom period farmhouse and adjoining two bedroom cottage (suitable for holiday letting)
- Two further traditional barns with potential for conversion, subject to planning
- Range of adaptable farm buildings
- Level and gently sloping pasture land
- EPC D & D

Guide Price: £2,150,000

Holsworthy Farms & Land Department
farms@kivells.com | 01409 259547

Land Sold

Land at High Ridge Farm North Tawton, Devon



A highly productive run of approx. 34 acres of level pasture land with planning permission for a 80ft x 40ft storage shed.

Guide Price £340,000

Exeter Farms & Land Department
simon.alford@kivells.com | 01392 252262

Land Sale Agreed

KIVELLS

www.kivells.com

Land at Wooldown

Marhamchurch, Bude | Guide Price £100,000



An attractive and very gently sloping pasture field extending to approx. 4.63 acres, well fenced with road frontage and good access.

Holsworthy Farms & Land Agency
Farms@kivells.com | 01409 259547

Land at Hole Farm (Lot 2)

Ashwater, Beaworthy | Guide Price £375,000



Just over 37 acres of well farmed, productive grassland. Mainly level/gently sloping and extremely well fenced. Mains and natural water supplies.

Holsworthy Farms & Land Agency
Farms@kivells.com | 01409 259547

Land at Cransworth

St. Wenn, Bodmin | Guide Price £525,000



Approx. 57 acres of productive pasture land, gently sloping and south facing with road frontage and a natural water available.

Holsworthy Farms & Land Agency
Farms@kivells.com | 01409 259547

Land at West Vognacott & Honeycroft (Lot 1)

Chilsworthy, Holsworthy | Guide Price £345,000



Just under 55 acres of pasture and amenity land in a quiet, rural setting. Further land available (lots 2 & 3).

Holsworthy Farms & Land Agency
Farms@kivells.com | 01409 259547

Land at West Vognacott & Honeycroft (Lot 2)

Chilsworthy, Holsworthy | Guide Price £200,000



Some 29 acres of pasture land in a quiet rural, yet accessible location. Further land available as Lots 1 & 3.

Holsworthy Farms & Land Agency
Farms@kivells.com | 01409 259547

Land at Myrtle Cottage Farm

Alverdiscott, Barnstaple | Offers in Excess of £425,000



A cracking run of nearly 43 acres of pasture land, level and gently sloping with road frontage and excellent access.

Holsworthy Farms & Land Agency
Farms@kivells.com | 01409 259547

Land Sale Agreed

KIVELLS

www.kivells.com

Land at Lower Rescorla Farm

Rescorla, St Austell | Guide Price £100,000



Just under 4 acres of sloping amenity/pasture land on the edge of a rural hamlet. Possible development potential (STP)

Holsworthy Farms & Land Agency
Farms@kivells.com | 01409 259547

Land at Southcombe

Northlew, Okehampton | Guide Price £130,000



A block of approx. 19.14 acres of peacefully located pretty pasture and woodland, gently sloping and in three good sized enclosures with a natural water supply.

Holsworthy Farms & Land Agency
Farms@kivells.com | 01409 259547